



Translation of copy in original language

IMPORTANT:  
MUST BE READ

EN

831085200

rev. 1.0

03/07/2023

## User Manual 6 LCD Keys

# PELLET STOVE

-----



TABLE OF CONTENTS

1 PRODUCT DESCRIPTION ..... 3

1.1 TECHNISCHE DATEN ..... 3

1.2 DETAILS DES PRODUKTS ..... 4

2 PRODUCT USE ..... 6

2.1 LCD DISPLAY ..... 6

2.2 USER FUNCTIONS ..... 7

2.3 ALARMS ..... 11

TABLE OF CONTENTS

# 1 PRODUCT DESCRIPTION

## 1.1 TECHNISCHE DATEN



The "TYPE" stove type is indicated on the CE plate, present on the back of the product or inside the openable doors.

### Stoves

Type	SPE6.6	SPIN7.5AT	SPCT9	SPCA7.5	SPV-M105S	SPV-M115S	SPV-M13	T551
Heat output (PMAX / PMIN kW)	6.5/3.1	6.5/2.6	8.0/2.6	7.9/3.0	10.0/3.2	12.5/5.0	14.0/4.0	8.0/3.1
Efficiency (PMAX / PMIN %)	89.0/94.1	87.0/91.1	88.0/90.1	87.0/93.0	91.5/94.5	90.0/94.5	88.0/95.0	92.0/95.6
Hourly consumption (PMAX / PMIN kg/h)	1.6/0.6	1.6/0.8	2.0/0.7	1.9/0.7	2.4/0.7	3.0/1.1	3.4/0.9	1.9/0.7
CO at 13% of O <sub>2</sub> (PMAX / PMIN %)	0.005/0.023	0.012/0.011	0.010/0.014	0.020/0.014	0.007/0.016	0.018/0.024	0.014/0.023	0.008/0.010
Fume temperature (MAX °C)	197	224	215	217	180	208	244	166
Gas flow (MAX g/s)	5.5	5.4	6.2	7.4	8.1	9.6	8.7	6.6
Minimum draw (Pa)	11	13	13	10	11	12	10	12
Voltage / Frequency (V/Hz)	230/50	230/50	230/50	230/50	230/50	230/50	230/50	230/50
Distance from flammable wall (Back / Side / Front mm)	151 / 200 / 1000	301 / 150 / 1000	101 / 250 / 1000	250 / 250 / 1000	250 / 300 / 1000	200 / 300 / 1000	200 / 300 / 1000	301 / 300 / 1000
Distance from NON-flammable wall (Back / Side / Front mm)	151 / 100 / 1000	201 / 100 / 1000	101 / 150 / 1000	250 / 250 / 1000	200 / 250 / 1000	200 / 200 / 1000	200 / 200 / 1000	201 / 200 / 1000

### Traditionelle Öfen und Slim-Öfen

Type	SPSC8C	SPCS10	SSL6.6	SPE8.6	SS10-24	S10-24
Heat output (PMAX / PMIN kW)	8.0/4.1	9.2/3.1	6.5/3.2	8.5/2.6	9,9 / 3,0	9,9 / 4,5
Efficiency (PMAX / PMIN %)	87.5/91.6	88.0/92.1	90.0/93.1	90.5/95.6	89.0/93.6	90,0 / 94,5
Hourly consumption (PMAX / PMIN kg/h)	1.9/0.10	2.2/0.8	1.6/0.8	1.9/0.6	2.5/0.7	2,3 / 1,0
CO at 13% of O <sub>2</sub> (PMAX / PMIN %)	0.010/0.021	0.010/0.021	0.006/0.018	0.004/0.046	0.013/0.011	0,006 / 0,010
Fume temperature (MAX °C)	183	207	174	194	203	204
Gas flow (MAX g/s)	6.2	5.6	5.6	4.9	7.3	6,7
Minimum draw (Pa)	12	13	12	13	13	11
Voltage / Frequency (V/Hz)	231/50	230/50	230/50	230/50	231/50	230 / 50
Distance from flammable wall (Back / Side / Front mm)	201 / 200 / 1000	51 / 200 / 1000	200 / 300 / 1000	50 / 150 / 1000	31 / 300 / 1000	30 / 300 / 1000
Distance from NON-flammable wall (Back / Side / Front mm)	201 / 150 / 1000	51 / 150 / 1000	200 / 300 / 1000	50 / 150 / 1000	31 / 150 / 1000	30 / 150 / 1000

### Inserts



Type	IP6.55S	IP9.55S
Heat output (PMAX / PMIN kW)	6.5/3.1	8.5/3.2
Efficiency (PMAX / PMIN %)	91.5/90.1	90.0/91.6
Hourly consumption (PMAX / PMIN kg/h)	1.6/0.8	2.0/0.8
CO at 13% of O <sub>2</sub> (PMAX / PMIN %)	0.015/0.025	0.005/0.025
Fume temperature (MAX °C)	171	148
Gas flow (MAX g/s)	4.8	8.9
Minimum draw (Pa)	13	11
Voltage / Frequency (V/Hz)	231/50	231/50
Distance from flammable wall (Back / Side / Front mm)	210 / 210 / 1000	180 / 180 / 1000
Distance from NON-flammable wall (Back / Side / Front mm)	210 / 210 / 1000	180 / 180 / 1000

## 1.2 DETAILS DES PRODUKTS

Consult the Technical Data paragraph to view the product characteristics and the Installation, use and maintenance manual for all information for correct installation.

**i** In case of installation with upper flue outlet it is necessary to break the pre-cut present in the top of the product. Use a hammer and with a firm blow break the pre-cut. Be careful not to damage the rest of the stove.

### TRADITIONAL AND SLIM STOVES

<p><b>i</b> THE LENGTH OF THE FUME DUCT MUST BE A MAXIMUM OF 6 METRES OF 80 mm DIAMETER TUBE AND EACH 90° BEND OR (T) CONNECTION MUST CORRESPOND TO 1 METRE OF TUBE.</p> <p>TO GUARANTEE THE CORRECT OPERATION AND YIELD OF ALL OUR PELLET ITEMS, INSTALL A T-CONNECTION AND AT LEAST 1 LINEAR METRE OF FUME DUCT CERTIFIED IN ACCORDANCE WITH EN1856-2 BEFORE CARRYING OUT A CONNECTION TO THE FLUE PIPE.</p>	
<p><b>i</b> Installieren Sie den Turbulator (sofern vorhanden) im Rauchkanal. Der lineare Teil muss auf der Unterseite des T-Stücks aufliegen.</p>	

### AIRTIGHT STOVE ONLY

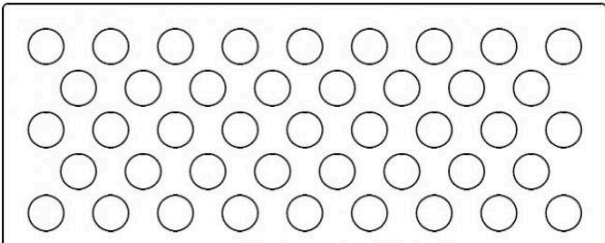
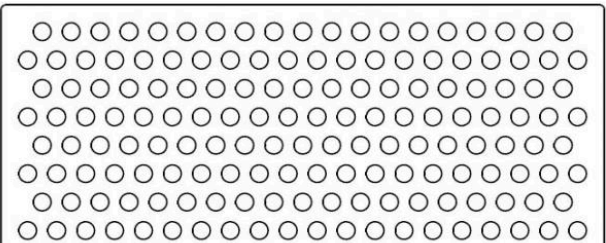
If properly connected by means of a suction tube, these stoves draw the combustion air and the air necessary for glass cleaning directly from outside and not from the room where they are installed, preserving the oxygen in the room. Using coaxial tubes the air will be pre-warmed contributing to improved combustion and lower emissions into the atmosphere. Ideal for passive houses, they offer best comfort at the lowest cost. The stove works even if not connected to the external air intake.

**! ATTENTION** IN SPV-M13 DUCTED STOVES WITH 2 DUCTS, IN CASE OF USE OF THE PRODUCT WITHOUT THE INSTALLATION OF THE TWO REAR DUCTS, IT IS NECESSARY TO EXTEND THE OUTPUTS OF THE SAME OUTSIDE THE MACHINE BODY SO THAT THE UNVENTILATED HEAT COMES OUT TO AVOID OVERHEATING OF THE STOVE.

### DUAL FUEL STOVES

In dual fuel stoves it is possible to choose the type of fuel to be introduced in the product. In fact, it is possible to burn pellets or hazelnuts. It is not possible to mix the two fuels.

It is very important, after choosing the type of fuel, to change the bottom of the brazier and the parameter settings.

Brazier bottom for pellets (TYPE 1)	Pits brazier bottom (TYPE 2)
	

**! ATTENTION** Do not trade the two different funds, dangerous malfunctions could be created.

After changing the bottom, from the display it is necessary to choose the type of fuel:

TYPE 1: Pellet

TYPE 2: Pits

## PELLET INSERTS



THE LENGTH OF THE FUME DUCT MUST BE A MAXIMUM OF 6 METRES OF 80 mm DIAMETER TUBE AND EACH 90° BEND OR (T) CONNECTION MUST CORRESPOND TO 1 METRE OF TUBE.

TO GUARANTEE THE CORRECT OPERATION AND YIELD OF ALL OUR PELLET ITEMS, INSTALL A T-CONNECTION AND AT LEAST 1 LINEAR METRE OF FUME DUCT CERTIFIED IN ACCORDANCE WITH EN1856-2 BEFORE CARRYING OUT A CONNECTION TO THE FLUE PIPE.

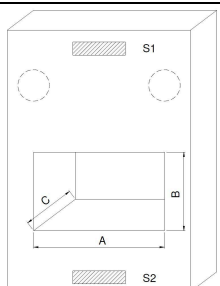
IN THE EVENT THAT THE PRODUCT IS EQUIPPED WITH A SUPERIOR SMOKE OUTLET FITTING, IT IS NOT NECESSARY TO INSTALL THE T FITTING.

### INTRODUCTION:

The minimum monoblock dimensions and openings for correct air circulation must be taken into account when installing to prevent the item from overheating.

Minimum area measurements for natural air convection must be observed.

Air movement can also take place at the side or from the rear of the cladding. Openings must be protected by grilles or protective devices so as to prevent access to the electrical parts of the chimney or moving parts. Under distances from flammable walls.

	Pellet insert IP6.55S	Pellet insert IP6.55S Height 49 cm	Pellet insert IP9.55S Standard glass	Pellet insert IP9.55S Large glass	Pellet insert IP9.55S Removable
	A= 580 mm B= 530 mm C= 470 mm S1= 450 cm2 S2= 450 cm3	A= 580 mm B= 500 mm C= 470 mm S1= 450 cm2 S2= 450 cm3	A= 620 mm B= 635 mm C= 700 mm S1= 500 cm2 S2= 500 cm2	A= 895 mm B= 635 mm C= 700 mm S1= 500 cm2 S2= 500 cm2	A= 635 mm B= 555 mm C= 670 mm S1= 500 cm2 S2= 500 cm3



### ATTENTION

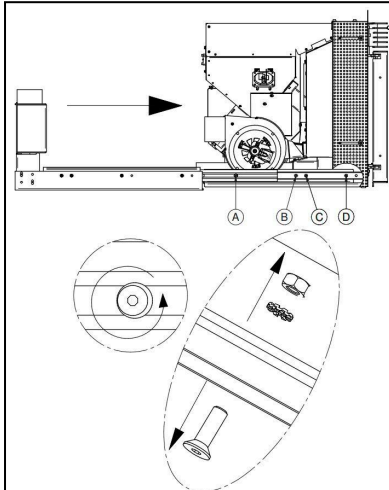
If there are upper beams or wooden finishes or in any case objects made of flammable material, they must be adequately insulated or they must be installed outside the irradiation area.

### PROCEDURE FOR THE CORRECT INSTALLATION OF PELLET INSERTS

Remove frames or any micro-perforated items and remove the insert from the base. Secure the base to a support surface or trestle (OPTIONAL). Carry out the connections to the chimney and the electrical connections. Replace the insert on the base ensuring that it is correctly connected to the fume duct. Reposition the frames or micro-perforated items and prepare the display installation.

Any extraordinary maintenance operations shall be carried out by authorised staff, with the insert switched off, after slightly lifting its front side and pulling it out.

### REMOVABLE INSERT WITH GUIDES



Installation: Remove the insert.

ATTENTION: the weight of the insert is almost 100 Kg. The use of a stand is recommended to support the insert once removed.

Loosen the screws A,B,C,D as indicated to remove the insert from the guides.

Fasten the plate, reassemble the insert in the guides and then reposition it.

After fixing the insert, lock the grids with the supplied screws and fasten the display.

Pellet loading: the machine must be switched off and extracted to load pellets.

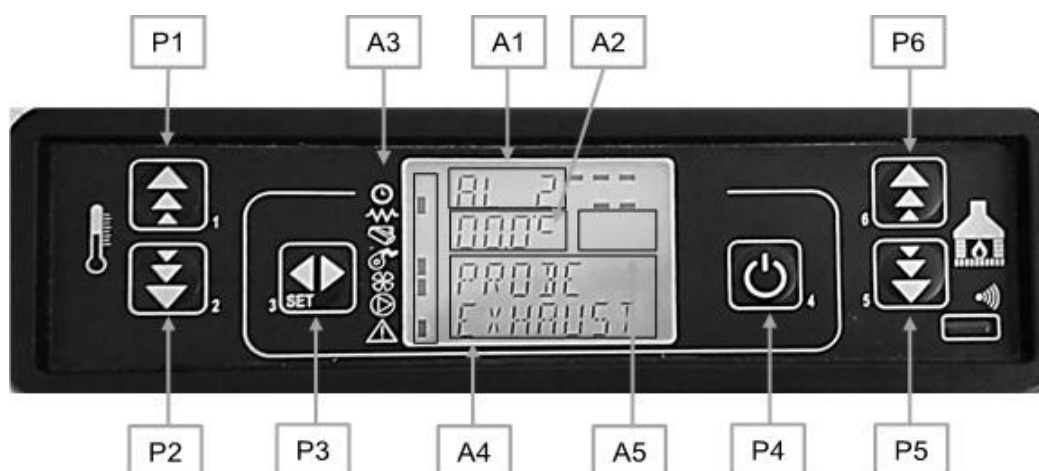
ATTENTION: the insert is equipped with an electrical safety device: when the insert is removed, the device switches off the power supply. The device MUST be turned off to load the pellets (OFF). By doing so, you will prevent any fumes inside the chamber from being released into the room.

### DUCT INSTALLATION

After installing the insert, secure the bracket with the second blower to the wall in a comfortable position and if possible, not above the flexible pipe supplied with the product. Carefully tighten the clamps and connect the blower to another flexible pipe to channel the air into another room.

## 2 PRODUCT USE

### 2.1 LCD DISPLAY



The control board can be managed by simply pressing a few buttons on the control panel. A display and the LED indicators inform about the stove operational status. When in programming mode all the parameters that can be modified using the buttons are shown on the display.

#### PANEL DESCRIPTION

Button P1 – Increase: When in programming mode, use this button to modify/increase the selected menu value. When in working mode/switched off, use instead this button to increase the room thermostat temperature value.

Button P2 – Decrease: When in programming mode, use this button to modify/decrease the selected menu value. When in working mode/switched off, use this button to decrease the room thermostat temperature value.

Button P3 – Set/Menu: This button allows access to the user and technical parameters menu. After entering the menu, use this button to access the next sub-menu or set the value and move to the next menu item when in programming mode

Button P4 – ON/OFF: Hold this button down for two seconds to manually switch the stove on or off respectively depending on its initial on or off status. If alarms have occurred which have caused the product to lock, the button allows unlocking and subsequent passage to the off status. After accessing the menu or during the programming phase, use this button to access the upper menu level. Any changes are automatically saved.

Button P5 – Decrease heat output: When in working mode, use this button to decrease the heat output value. In menu mode, use this button to move to the next menu item or, in programming mode, to go back to the subsequent sub-menu item. Any change is automatically saved.

Button P6 – Increase heat output: When in working mode, use this button to increase the heat output value. In menu mode, use this button to move to the next menu item or, in programming mode, to go back to the subsequent sub-menu item. Any change is automatically saved.

String A1: Error codes and clock.

String A2: Ambient temperature.

String A3: Component statuses: the led next to the various symbols activates the component. In order: Chronothermostat, Glow Plug, Auger, Smoke Motor, Ambient Exchanger, Pump (if present), System in alarm.

A4 and A5 strings: Dialogue and Power.

#### MENU

Pressing the P3 button accesses the menu.

It includes several items and levels to access settings and control board programming.

The menu items providing access to the technical setting are protected by access code. Menus may vary depending on the type of product.

#### USER MENU

The table below briefly describes the menu structure, focusing in particular on the functions available to users.

#### CHOOSE LOAD menu (DOUBLE FUEL STOVES ONLY)

Choose TYPE 1 for the Pellet while TYPE 2 for the Pits.

#### FAN ADJUST menu

This setting allows the fan speed of the ducting to be set.

### SET CLOCK menu

Use this function to set current time and date. The control board is equipped with a lithium battery guaranteeing the time clock 3/5 year-long autonomy. Set the current date by pressing OK and the respective arrows to increase or decrease the selected values.

### SET CRONO MENU

Submenu – Enable chrono:

Allows every chrono-thermostat function to be enabled or disabled.

Sub-menu – Daily chrono:

The daily programmable chrono-thermostat functions can be enabled, disabled and set. In each program you will find: Switch-on time, Switch-off time, Set stove heat output, Room temperature, Days of the week for which the programme is to be active.

Sub-menu – Weekly chrono:

The weekly programmable chrono-thermostat functions can be enabled, disabled and set. The weekly programmer has 4 independent programs whose final effect involves the combination of the 4 individual programs. The weekly programmer can be enabled or disabled. Moreover, if the time is set to OFF, the time clock ignores the corresponding control. In each program you will find: Switch-on time, Switch-off time, Set stove heat output, Room temperature, Days of the week for which the programme is to be active. Monday is 1 and Sunday is 7.

Attention: perform the programming carefully avoiding generally overlapping of the activation and/or deactivation hours on the same day in different programs.

Sub-menu M3 – 4 – Chrono week-end

It is used to enable/disable and to set the chronothermostat functions on weekends (days 6 and 7, i.e. Saturday and Sunday). SUGGESTION: if you still do not know exactly the result you want to obtain, enable only one programme at a time to avoid confusion and unwanted stove switching on and off.

Disable the daily programme if you want to use the weekly programme. If you use the weekly programme for 1, 2, 3 and 4 programmes, never enable the week-end programme.

Always disable the weekly programme before enabling the week-end programme.

### LANGUAGE

Use this command to select one of the languages available. To move to the next language press P1 (increase) to go back, press P2 (decrease), and to confirm press P3.

### STAND-BY menu

In this menu it is possible to activate or deactivate the automatic stand-by of the stove. When selected, if the conditions have all been met, the stove will enter MODULATE – OK STDBY. This state lasts for 10 minutes. Once this time has elapsed, the stove will switch off and then switch on again when required.

### BUZZER MODE menu

It is used to enable or disable the buzzer board.

### INITIAL LOAD

This function is only available when the stove is OFF and is used to load the auger when the stove is started for the first time when the pellet hopper is empty. After selecting the menu, press P1. The exhaust blower switches on at the maximum speed and the auger tube (auger tube LED on) starts working. They will switch off once the period of time indicated on the display has elapsed or after pressing the P4 button.

**INITIAL IGNITION MUST BE PERFORMED BY AUTHORISED PERSONNEL ONLY, NOT BY THE PURCHASER.  
CONTACT THE SERVICE CENTRE THAT WILL SEND OUT A SPECIALIST TECHNICIAN.**

### STATE STOVE

Enter the STOVE STATUS menu, after pressing the P3 button, the display scrolls the status of a number of variables during operation of the stove in working mode.

### PELLET TYPE menu

Use buttons P1 and P2 to change the pellet feed percentage with a value of max +9 and min -9. Each step increases or decreases the total auger period by 3% compared to the default period.

### CHIMNEY TYPE menu

Use buttons P1 and P2 to change the smoke fan speed percentage with a value of max +9 and min -9. Each step increases or decreases all smoke fan speeds by 5%.

### TECHNICAL MENU

This menu item is reserved for the stove installer.

## 2.2 USER FUNCTIONS

### Stove ignition

Check that there are pellets in the hopper, that the brazier is correctly positioned and clean of any combustion residue and then close the door. To light the stove, press P4 for a few seconds. Successful ignition is signaled on the display with the writing "START or CHECK UP" In these conditions, the stove goes into the preheating state, the glow plug (visible from the glow plug LED) and the smoke suction fan turn on. \_x000D\_

Any anomalies during the ignition phase are signaled on the display and the stove goes into the alarm state.

### **Loading with Pellets**

After about 1 minute, the pellet loading phase begins, the message "Carica Pellet" scrolls on the display. In a first phase, the auger loads the pellets into the brazier for a fixed time. In the second phase, the auger switches off, while the speed of the fumes and the glow plug remain in the previous state. If ignition does not take place after this phase, the auger turns on again and the spark plug stays on.

### **Ignition fault**

After a predefined time, if the flue gas temperature has not reached the minimum value allowed, the boiler goes into an alarm state. If there are unburned pellets inside the brazier, the brazier must be emptied before relighting the stove. In this way, waste of pellets and possible explosions inside the combustion chamber will be avoided. If the pellets have started to burn but the ignition failure alarm still occurs, it is necessary to wait for all the pellets to burn and then re-ignite. In any case, check that there is pellet inside the tank.

### **Fire present**

After the fume temperature has reached and exceeded a pre-set threshold, the system goes into ignition mode showing the words "FIRE PRESENT or STABILIZATION" on the display. The fume speed is fixed, the auger turns on for a fixed time and the glow plug is off. Any anomalies stop the board and signal the error status.

### **Stove operational**

After the fumes temperature has reached and exceeded a given value and has maintained it for at least a pre-set time, the stove switches to work mode which is the normal operating mode. If the boiler temperature is equal to that of the set power, the pump turns on. During this phase, the stove cleans the brazier. The message "BURN POT CLEANING" scrolls on the display, the auger is on and the smoke fan is on. After a given time, the stove returns to working status.

### **Changing set heat output**

During stove normal operation (Work), the heat output can be changed by using, the F5, F6 buttons. Press the P5 button again to increase the heat output and the F6 button to decrease it. The display will show the set heat output. To exit the set, wait 5 seconds without performing keyboard operations, or press P3 or P4.

### **Changing set room temperature**

Press the P2 button to change the set room temperature. The display shows the set room temperature (SET temperature value). Press P1 (increase) and P2 (decrease) buttons to modify the temperature. The value is saved after approx. 5 seconds and the display goes back to normal. Otherwise, press P3 or P4 to exit.

### **Changing the ducting ventilation**

To change the ducting speed enter menu 1 and adjust the ventilation speed. The setting goes from 0 to 5 and Automatic. By setting the speed to 1,2,3,4, or 5 the ducting will always operate at the same speed even when the stove heat output is changed. By setting to Automatic, the ducting will operate according to the heat output of the stove. Setting it to 0 will disable the ducting. For a number of heat output 4 and 5 models, the ducting will be enabled to dispose of any excess heat. Change in fan speed is not instantaneous.

### **Laden von Pellets in den Tank während des Betriebs (NUR MODELLE MIT TANKSICHERUNG)**

While the stove is operating it is possible to load pellets into the tank. During this operation the auger is deactivated and a safety sound will be activated to indicate that the tank door is open. You have 90 seconds in which to refill and then close the door. After this time the stove enters a DEPRESSION / PRESSURE SWITCH alarm. Reset the alarm and once the final cleaning time has expired, turn the stove back on.

### **External thermostat/chrono-thermostat use**

If an external room thermostat is to be used, make the connection to the TERM terminals.

- External thermostat
- External chrono-thermostat

The stove external thermostat is enabled when the contact is closed with stove on.

### **Use of external thermostat for ducting control (only some models)**

A thermostat can be connected to control the ducting. This operation may only be performed by authorised personnel. Use a 2-pole cable with everyday double insulation. Connect the two poles to the connector on the circuit board on the N.H20 connector for ducting 1 and on the N.PEL. connector for ducting 2. Enabling the two display thermostats is not required. When the thermostat no longer requires ducting, it will switch off.

### **Room temperature reaches the set value (SET temperature)**

When the set room temperature value is reached, the stove heat output is automatically set to the minimum value. During this phase, "MODULAT-" appears on the display. If room temperature falls below the set value (Set temperature), the stove will return to "WORK" mode and to the previously set heat output (Set heat output). If there is an external thermostat and the room temperature has been set to T-e, if the thermostat is open it will begin modulation and if closed, it will return to the heat output set.

### Cleaning the burn pot

When the stove is in the working mode, the "BURN POT CLEANING" mode is activated for the period determined by a pre-set parameter at certain intervals.

### Stand-by

When enabled in the menu, the Stand-by function allows the stove to be switched off after complying with the following conditions. It is enabled if, for a certain time, the room temperature is higher than the set temperature (Room set) plus a pre-set temperature delta. "OK STBY" appears on the display. At the end of the set time, the message "COOLING WAIT" appears on the display. In this state, the stove has an auger tube closed (auger tube off) and the heat exchanger switches off. When the fume temperature reaches a given threshold, the stove enters stand-by mode and the wording "STAND-BY" scrolls across the display. The auger, heat exchanger and exhaust blower are all switched off.

The stove restarts if the room temperature falls below the set temperature (Room set) minus the threshold given by the temperature delta.

### Stove switch off

Hold P4 button down to switch off the stove. The message "SWITCH OFF" appears on the display. The auger tube motor stops (the auger tube LED is off) and the exhaust blower speed is pre-set. The fan of the exchanger (exchanger LED on) remains active until the fume temperature falls below a pre-set value. After a certain time, if the temperature of the fumes is below a given threshold, the stove switches off, displaying the message "SPENTO/OFF".

### Product Off

The display will show the wording OFF. The exhaust blower stops.

### Re-ignition of the product

It will be possible to switch the stove back on only at the end of the safety period of time set and if the fume temperature has not cooled.

### REMOTE CONTROL IR (IF INCLUDED OR OPTIONALLY SUPPLIED)

The control panel of the stove has been set up to receive a number of commands via remote control.

- On/off command: pressing the two buttons marked "1" and "6" simultaneously switches the stove on or off.
- Temperature adjustment: during normal working mode, pressing button "2" and then buttons "1" and "2", marked with a thermometer, sets the desired temperature.
- Heat output adjustment: during normal working mode, pressing buttons "5" and "6" marked with a flame, sets one of the heat output levels of the stove.



## 2.3 ALARMS

In the event that an operating fault occurs, the board intervenes and signals the occurrence of an irregularity, switching on the alarm LED (alarm LED on) and emitting acoustic signals. The possible alarm messages are listed below:

Display shows	Cause
POWER OUTAGE ALARM	Absence of mains voltage
FUME PROBE ALARM	Fume probe faulty
HOT FUMES / FUMES TEMP. ALARM	Fume overheating
ALARM NO ENCODER / EXTRACT.-FAULTY / FUME EXTRACT.	Exhaust blower fault, not working
ALARM IGNITION FAILED / FAILED IGNIT. / NO IGNIT.	Stove does not ignite
PELLET VERIFICATION ALARM / NO PELLETS / PELLETS DEPLETED	Shutting down due to insufficient pellets
THERMAL SAFETY ALARM/ THERMOSTAT	Safety thermostat activated
NO DEPRESSION ALARM / PRESSURE SWITCH	Depressor activated
AUGER SAFETY ALARM	The auger tube turns continuously
INSUFFICIENT DRAW ALARM	Burn pot or air extraction pipe obstructed
CLEANER FAULT ALARM	Burn pot cleaner is blocked/Firebox door not shut correctly
AUGER TUBE ENCODER ALARM	The board does not read the auger tube encoder. No connection
AUGER TRIAC ALARM	The auger tube turns continuously
WATER PROBE ALARM	Water probe broken or short-circuited
HOT WATER ALARM	Stove water maximum threshold exceeded
WATER PRESSURE ALARM	Water pressure too low or too high
AIR PROBE ALARM	Air probe broken or short-circuited
TURBULATOR FAULT ALARM	The mechanism of the Turbulators is blocked

**In case of alarm, the stove is immediately switched off.**

Alarm status is reached after a given time, EXCEPT BLACK-OUT ALARM, and can be reset by prolonged pressure on ON/OFF. Whenever an alarm is cleared, the stove starts a switching-off phase for safety reasons. The alarm LED (alarm LED on) will remain on and the buzzer, if enabled, will sound intermittently during the entire alarm phase. Should the alarm not be cleared, the stove will in any case be switched off and the alarm message will remain on the display.

### Black-out Alarm

If a power failure occurs for a certain period of time, the device will go into a BLACK-OUT alarm when the power comes back on. It is necessary to wait for the stove to cool down and then turn it back on.

<b>Ignition Failed Alarm</b> The alarm is triggered in the event of ignition phase fault. This happens if after a pre-set time, the temperature of the fumes does not exceed the threshold set by parameters.	<b>⚠ ATTENTION</b> Clean the brazier of the unburnt pellets.
--	---

### Safety thermostat

If the general safety thermostat detects a water temperature exceeding the trigger threshold, it immediately switches off the auger tube (to which it is connected in series), while the controller acquires this change in status. The THERMIC SEC. message is displayed and the system is shut down. Unscrew the black cap on the back of the stove and press the button to reset the contact.

### Negative pressure alarm

This alarm occurs if:

- The flue pipe is non-compliant: the pipe must keep the minimum pressure in Pascals as required by the manufacturer (see TECHNICAL DATA) at both minimum and maximum heat output.
- The flue pipe or combustion air intake is obstructed.
- The combustion chamber door and/or pallet hopper door are open.
- Excessive dirt inside fume circulation area: empty the ash that is deposited in the part adjacent to the ash drawer compartment.

### SERVICE MESSAGE

The stove will display the message SERVICE (or SER) during operation depending on the number of hours of operation. The wording does not lock operation of the stove, but non-routine maintenance will be required by an authorised technician, who will reset the service hours.

EVA STAMPAGGI SRL reserves the right to make technical changes to this manual without notice.

The data and characteristics indicated do not bind , which reserves the right to make any changes deemed appropriate without obligation of notice or replacement.

All rights reserved. Total or partial reproduction prohibited without express authorization from ,

**EVA STAMPAGGI SRL**

Via Cal Longa Z.I.

31028 Vazzola (TV) ITALIA

Tel: +39 0438 740433

Fax: +39 0438 740821

Made in Italy

