



Translation of copy in original language

IMPORTANT:
MUST BE READ

EN

831091500

rev. 1.0

02/10/2023

User Manual 3 Keys DUEPI 2.0

PELLET STOVE SPCT8



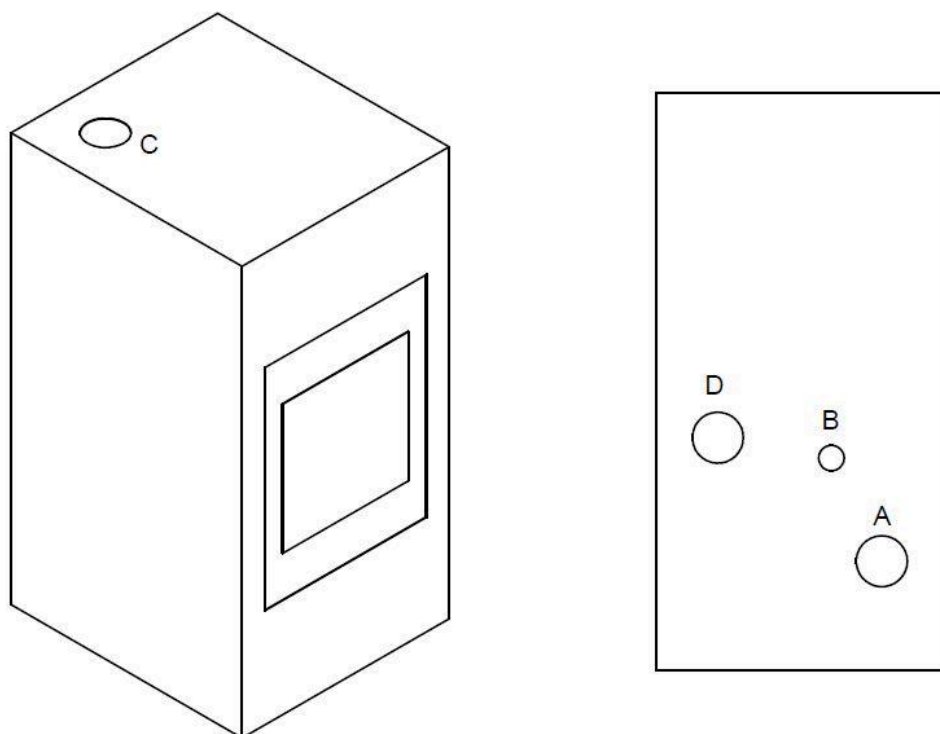
TABLE OF CONTENTS

1 PRODUCT DESCRIPTION	3
1.1 SPCT8	3
1.2 TECHNICAL DATA	3
1.3 PRODUCT DETAILS	5
2 PRODUCT USE	5
2.1 3 BUTTON DISPLAY	5
2.2 USER FUNCTIONS	7
2.3 ALARMS	8

TABLE OF CONTENTS

1 PRODUCT DESCRIPTION

1.1 SPCT8



1.2 TECHNICAL DATA

Smoke exhaust	A	80	mm
PRIMARY AIR INTAKE	B	40	mm
Upper fume outlet (if present)	C	80	mm
Ducted Air (if any)	D	80	mm
weight		45-55	Kg
Tank capacity		11-13,5	Kg
Heating room size		140-200	m3
		Max	Min
Pellet consumption	Kg/h	2.0	0.6
smokes temperature	°C	214	105
Gas flow	g/s	6.1	3.1
minimum draft	Pa	12	10
Tension / frequency	V/Hz	230 / 50	230 / 50
Electrical power	W	320	
	Side	Back	Front
Distance from flammable wall (mm)	250	100	1000

PRODUCT INFORMATION SHEET ACCORDING TO (EU) 2015/1185 AND (EU) 2015/1186

producer	[\$ COMPANY_NAME \$]		
Brand	See product label		
Type/ model Identifier	---- / SPCT8		
General description of the appliance	pellet stove		
Rules Applied	EN14785:2006		
Notified organ	IMQ SPA NB 0051		
Indirect hrating functionality	NO		
Direct thermal power	8.0	kW	
Indirect thermal power	----	kW	
Seasonal energy efficiency	80,2	%	
Efficiency energy index	119		
Efficiency energy class	A+		
Favorite fuel (unique)	Compressed wood with moisture content < 12 %		
Emissions due to space heating at nominal heat output (13 % O2)	PM	14	mg/Nm3
	OGC	4	
	CO	122	
	NOx	98	
Emissions from room heating at minimum heat output (13 % O2)	PM	19	mg/Nm3
	OGC	4	
	CO	166	
	NOx	89	
Thermal power	Nominal thermal power (Pnom)	8.0	kW
	Minimum thermical power (Pmin)	2.5	
Useful efficiency (NCV received)	Useful efficiency at nominal heat output (ηth, nom)	88.0	%
	Useful efficiency at minimum thermal power (ηth, min)	90.0	
Auxiliary electricity consumption	At nominal heat output (elmax)	0.097	kW
	At minimum thermal power (elmin)	0.042	
	In stand-by mode (Elsb)	0.0015	
Type of thermal power / room temperature control	With electronic room temperature control	4	
Other control options	Room temperature control with presence detection	NO	
	Room temperature control with open window detection	NO	
	With remote control option	NO	
Power required for permanent pilot light	Power required for pilot light (if applicable) (Ppilot)	---- KW	
Carefully read the installation, use and maintenance instructions.			
Eva Stampaggi S.r.l. Via Cal Longa Z.I. 31028 Vazzola (TV) ITALY P.IVA: 01183110269 Tel. +39 0438 740433 Fax. +39 0438 740821 e-mail: info@evacolor.it			

Based on EU regulation 305/2011, the declaration of performance (DoP) is available on the websites:

www.evacolor.it
www.puntofuoco.net
www.montegan.it

1.3 PRODUCT DETAILS

INSTALLATION



THE LENGTH OF THE FUME DUCT MUST BE A MAXIMUM OF 6 METRES OF 80 mm DIAMETER TUBE AND EACH 90° BEND OR (T) CONNECTION MUST CORRESPOND TO 1 METRE OF TUBE.

TO GUARANTEE THE CORRECT OPERATION AND YIELD OF ALL OUR PELLET ITEMS, INSTALL A T-CONNECTION AND AT LEAST 1 LINEAR METRE OF FUME DUCT CERTIFIED IN ACCORDANCE WITH EN1856-2 BEFORE CARRYING OUT A CONNECTION TO THE FLUE PIPE.

Consult the Technical Data paragraph to view the product characteristics and the Installation, use and maintenance manual for all information for correct installation.



In case of installation with upper flue outlet it is necessary to break the pre-cut present in the top of the product. Use a hammer and with a firm blow break the pre-cut. Be careful not to damage the rest of the stove.

2 PRODUCT USE

2.1 3 BUTTON DISPLAY



PANEL DESCRIPTION

1. Button 1 opens the work programme settings. During setting, press it to move to the next menu item or increase the displayed value.
2. Button 2 opens the work temperature settings. During setting, press it to go back to the previous menu item or decrease the displayed value.
3. TIMER LED: It is on when the programmer timer setting is enabled.
4. TEMP OK LED: When illuminated, indicates that the room temperature has been reached. The stove then continues the heating in ECO mode.
5. DISPLAY LED: Indicates the stove working status and the settings menu.
6. AUGER LED: It is on when the Auger tube is working.
7. IGN LED: It is on when the ignition plug is on.
8. ON/OFF: It is the stove switching on/off button. Keep it down for a few seconds to switch the stove on. Press it also to clear the alarm displayed. During temperature setting, press it to enter the technical menu.
9. ON LED: It is on when the stove is switching on or heating. It flashes when the stove is in the cooling phase or error.
10. IR: Optional IR remote control sensor.
11. AL: It is on or flashes if the pressure switch or the safety thermostat were triggered.

USER MENU

User programming is possible through the menu accessible by holding down button 2. Scroll through the menus with buttons 1 and 2 and to enter the next level press button 8. The technical menu appears as follows:

Menu	Description
MN01	Set clock
MN02	Set chrono
MN03	Language
MN04	Stand-by
MN05	Sound
MN06	Manual loading
MN07	Stove data
MN08	Technical menu
MN09	Pellet Correction
MN10	Draft Correction
MN11	Output

MN01 Menu - Set clock

Press and hold button 2 until the text MN01 appears then confirm with the ON/OFF button (8). Use buttons 1 and 2 to change the current day and press button 8; set the time and press ON/OFF (8); set the minutes and press ON/OFF (8); set the current day in number and press ON/OFF (8), set the current month and press ON/OFF (8), set the current year; at this point to confirm and exit hold the ON/OFF button (8) until the time appears again.

MN02 Menu - Set chrono

Submenu – Enable chrono:

Selecting the "M2-2 prog day" menu, using the ON/OFF button, scroll through the various programming parameters and enable the daily clock.

Submenu – Day prog:

It is possible to set two operating ranges, the first with START1 Day and STOP1 Day, the second with START2 Day and STOP2 Day, which are delimited by the times set according to the following table where the OFF setting instructs the clock to ignore the command. To change, use the – (decrease) and + (increase) buttons while to confirm press ON/OFF.

Submenu – Weekly prog:

The "N2-3 Weekly Prog." menu is used to enable, disable and set the weekly chronothermostat functions.

The weekly programming function features 4 independent programmes. Moreover, if the time is set to OFF, the time clock ignores the corresponding control. The weekly programming function is briefly described in the tables below. To access the next function and to confirm the value press the ON/OFF button. It is possible to exit the menu by long pressing the ON/OFF button.

Submenu – Weekend prog:

It is used to enable/disable and set the chronothermostat functions on weekends (days 6 and 7, Saturday and Sunday). To enable, press the ON/OFF button in the "weekend chrono" item and set "on" using the – (decrease) button or the + (increase) button.

- To set the operating period for SATURDAY, set the times Start 1 weekend and Stop 1 weekend.
- To set the operating period for SUNDAY, set the Start 2 weekend and Stop 2 weekend times.

MN03 Menu - Language selection

Select the desired language. To move to the next language press the + (increase) button and to return to the previous one press the – (decrease) button. To confirm press ON/OFF.

MN04 Menu - Standby function

Used to enable or disable the standby mode. Once the M4 menu is selected with the ON/OFF button, press the – (decrease) button or the + (increase) button to change the status from ON to off and vice-versa.

MN05 Menu - Sound

To enable or disable the buzzer of the board during alarm reports. To enable or disable, press the – or + buttons and to confirm press ON/OFF.

MN06 Menu - Manual Loading

The manual loading function can only be activated when the board is off. It allows the auger to be loaded for a specified time. After selecting the M6 Menu, the text "Press plus" scrolls on the display: press the + (increase) button. The fume fan turns on at maximum speed, the auger turns on (auger LED on) and they remain so until expiry of the time shown on the display or until the ON/OFF button is pressed.

MN07 Menu - Stove data

Having entered the M7 menu, after pressing the ON/OFF button on the display, a number of variables scroll when the stove is in operation.

MN08 Menu - Technical menu

This menu item is reserved for the stove installer.

Menu MN09 - Pellet cor.

Used to change the combustion parameters pellet load percentage. With this adjustment, the supply of pellets in the burn pot is changed by a quantity ranging from -18% to +18%.

Menu MN10 - Draft cor.

Used to change the number of revolutions/minute of the fume motor in terms of percentage to improve the combustion quality based on the draft of the stove. The fume extractor speed adjustment varies from -18 to +18%.

MN11 Menu - Output

Pressing the ON/OFF button exits the menu and returns to the display of the work cycles.

2.2 USER FUNCTIONS

Standard functioning of a control board properly installed on an air stove is described below with reference to the functions available to users. The board automatically controls the stove working parameters. Users can manually switch the stove on or off and use the advanced functions, such as the weekly programmer or the timer.

First ignition

Upon switching on the board, the display shows the resident software version and then the stove status (OFF in case of first ignition).

Pellet loading

After approximately 1 minute the pellet loading phase begins and the message "Load Pellets" appears on the display. During the initial phase, the auger tube loads the pellets into the burn pot for a fixed time. In the second phase the auger tube turns off, while the speed of the fumes and the glow plug remain in the previous state. If ignition does not occur after this phase, the auger tube is switched on again and the glow plug remains on.

Flame present - Fire on

After the temperature of the fumes has reached and exceeded a pre-set threshold, the system switches to ignition mode and "flame stab." appears on the display.

The speed of the fumes is fixed, the auger tube turns on for a fixed time and the glow plug is turned off. Any problem during this phase will cause the control board to stop and the stove to go into error state.

Stove heating

After the temperature of the fumes has reached and exceeded a certain value and has maintained it for at least a predetermined time, the stove switches to the "heating" work mode which is the normal operating mode. The power can be set by pressing the P1 button while the ambient temperature can be set by pressing the P2 button. If the fume temperature reaches a certain set threshold, the air exchanger fan turns on. During this phase, the stove cleans the burn pot. The text "BURN POT CLEANING" scrolls on the display. Once the set period of time has elapsed, the stove goes back to the working mode.

Changing the work power

During the working phase, the heating power can be changed by pressing the P1 button. To increase the power, press the P1 button again while to decrease it press the P2 button. The set power level is displayed on the display. Wait 10 seconds to exit the set, without performing operations on the keyboard, or press the ON/OFF button.

Temperature Settings

Press the P2 button to change the ambient temperature. The set room temperature (temperature SET) is shown on the display and the P1 (increase) and P2 (decrease) buttons are used to change it. After approximately 10 seconds, the value is stored and the display returns to normal display or press ON/OFF to exit.

Ambient Temperature Set

When the ambient temperature reaches the set value, the heating power of the stove automatically decreases until it reaches its minimum value. In these conditions, the display shows the message "temp. reached".

If the ambient temperature returns to a value greater than the set temperature, the stove returns to the "heating" mode and to the previously set power (Power Set).

Loading pellets into the tank during operation

While the stove is operating it is possible to load pellets into the tank. During this operation the auger is deactivated and a safety sound will be activated to indicate that the tank door is open. You have 60 seconds before refueling and closing the door. After this time the stove enters a DEPRESSION / PRESSURE SWITCH alarm. Reset the alarm and once the final cleaning time has expired, turn the stove back on.

Stand-by

If enabled in the menu, this function is used to turn the stove off once the conditions explained below have been met. It is enabled if, for a certain time, the room temperature is higher than the set temperature (Room set) plus a pre-set temperature delta. The display shows the text "start-standby". At the end of the given time, the text "wait" appears on the display. When the temperature of the fumes reaches a given threshold, the stove enters the stand-by mode and the text "eco stop" scrolls. The stove restarts if the room temperature falls below the set temperature (Room set) minus the threshold given by the temperature delta.

Stove switch off

To turn off the stove, simply press button 8. After a system-controlled cooling phase, the stove is switched off.

System Error Reset

The stove signals any malfunctions detected through the relevant error code and message. Hold button 8 down for approx. 3 seconds and until the error message disappears from the LED display to clear any error and then switch the stove back on.

External thermostat/chrono-thermostat use

To use an external room thermostat, connect to the Cro/GSM Ext terminals.

The stove external thermostat is enabled when the contact is closed with stove on.

Set the room temperature below 6°C by selecting T-E. With the stove off, if you close the contact after 30 seconds it turns on. During heating, and the contact is opened, the stove first modulates and then turns off after a set time. The stove will turn off even if stand-by is disabled in the user menu.



However, it is possible to turn on the stove manually if T-E is open. In any case, if T-E is open the stove remains at power 1 and does not switch off automatically, switch off manually.

REMOTE CONTROL IR (IF INCLUDED OR OPTIONALLY SUPPLIED)

The control panel of the stove has been set up to receive a number of commands via remote control.

- ON/OFF function: pressing the ON/OFF button turns the stove on or off.
- Adjustment of the ambient temperature: during the normal operating mode by pressing the "+" and "-" button, distinguished by the thermometer, it will be possible to set the desired temperature set.
- Power adjustment: during the normal operating mode by pressing the "+" and "-" buttons, marked by the flame, it will be possible to set one of the power levels of the stove.



2.3 ALARMS

In the event that an operating fault occurs, the board intervenes and signals the occurrence of an irregularity, switching on the alarm LED (alarm LED on) and emitting acoustic signals. The possible alarm messages are listed below:

Display shows	Cause
POWER OUTAGE ALARM	Absence of mains voltage
FUME PROBE ALARM	Fume probe faulty
HOT FUMES / FUMES TEMP. ALARM	Fume overheating
ALARM NO ENCODER / EXTRACT.-FAULTY / FUME EXTRACT.	Exhaust blower fault, not working
ALARM IGNITION FAILED / FAILED IGNIT. / NO IGNIT.	Stove does not ignite
PELLET VERIFICATION ALARM / NO PELLETS / PELLETS DEPLETED	Shutting down due to insufficient pellets
THERMAL SAFETY ALARM/ THERMOSTAT	Safety thermostat activated
NO DEPRESSION ALARM / PRESSURE SWITCH	Depressor activated
AUGER SAFETY ALARM	The auger tube turns continuously
INSUFFICIENT DRAW ALARM	Burn pot or air extraction pipe obstructed
CLEANER FAULT ALARM	Burn pot cleaner is blocked/Firebox door not shut correctly
AUGER TUBE ENCODER ALARM	The board does not read the auger tube encoder. No connection
AUGER TRIAC ALARM	The auger tube turns continuously
WATER PROBE ALARM	Water probe broken or short-circuited
HOT WATER ALARM	Stove water maximum threshold exceeded
WATER PRESSURE ALARM	Water pressure too low or too high
AIR PROBE ALARM	Air probe broken or short-circuited
TURBULATOR FAULT ALARM	The mechanism of the Turbulators is blocked

In case of alarm, the stove is immediately switched off.

Alarm status is reached after a given time, EXCEPT BLACK-OUT ALARM, and can be reset by prolonged pressure on ON/OFF. Whenever an alarm is cleared, the stove starts a switching-off phase for safety reasons. The alarm LED (alarm LED on) will remain on and the buzzer, if enabled, will sound intermittently during the entire alarm phase. Should the alarm not be cleared, the stove will in any case be switched off and the alarm message will remain on the display.

Black-out Alarm

If a power failure occurs for a certain period of time, the device will go into a BLACK-OUT alarm when the power comes back on. It is necessary to wait for the stove to cool down and then turn it back on.

Ignition Failed Alarm

The alarm is triggered in the event of ignition phase fault. This happens if after a pre-set time, the temperature of the fumes does not exceed the threshold set by parameters.

⚠ ATTENTION

Clean the brazier of the unburnt pellets.

Safety thermostat

If the general safety thermostat detects a water temperature exceeding the trigger threshold, it immediately switches off the auger tube (to which it is connected in series), while the controller acquires this change in status. The THERMIC SEC. message is displayed and the system is shut down. Unscrew the black cap on the back of the stove and press the button to reset the contact.

Negative pressure alarm

This alarm occurs if:

- The flue pipe is non-compliant: the pipe must keep the minimum pressure in Pascals as required by the manufacturer (see TECHNICAL DATA) at both minimum and maximum heat output.
- The flue pipe or combustion air intake is obstructed.
- The combustion chamber door and/or pallet hopper door are open.
- Excessive dirt inside fume circulation area: empty the ash that is deposited in the part adjacent to the ash drawer compartment.

SERVICE MESSAGE

The stove will display the message SERVICE (or SER) during operation depending on the number of hours of operation. The wording does not lock operation of the stove, but non-routine maintenance will be required by an authorised technician, who will reset the service hours.

EVA STAMPAGGI SRL reserves the right to make technical changes to this manual without notice.

The data and characteristics indicated do not bind , which reserves the right to make any changes deemed appropriate without obligation of notice or replacement.

All rights reserved. Total or partial reproduction prohibited without express authorization from ,

EVA STAMPAGGI SRL

Via Cal Longa Z.I.

31028 Vazzola (TV) ITALIA

Tel: +39 0438 740433

Fax: +39 0438 740821

Made in Italy

